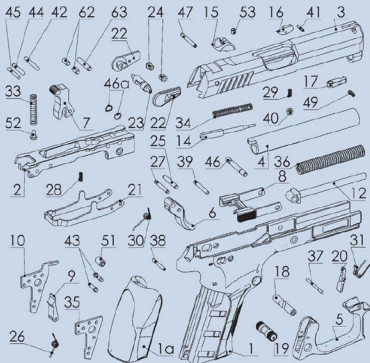


Explosive view



T910, P380, P9M

- | | |
|----------------------------|--------------------------------|
| 1-Polymer frame housing | 28-Slide stop spring |
| 2-Insert | 29-Extractor fixate pin spring |
| 3-Slide | 30-Trigger spring |
| 4-Barrel | 31-Magazine catch spring |
| 5-Trigger guard | 32-Spring (only Mk12) |
| 5.1- | 33-Hammer spring |
| 5.2- | 34-Firing pin spring |
| 6-Trigger | 35-Slide plate |
| 7-Hammer | 36-Recoil spring |
| 8-Slide stop | 37-Magazine catch pin |
| 9-Sear | 38-Slide plate fixate pin |
| 10-Ejector | 39-Trigger pin |
| 11- | 40-Extractor fixate pin |
| 12-Recoil spring guide | 41-Front sight pin |
| 13- | 42-Autosafety lever pin |
| 14-Firing pin | 43-Hammer catch pin |
| 15-Rear sight | 44-Hammer catch |
| 16-Front sight | 45-Hammer spring support pin |
| 17-Extractor | 46-Slide catch pin |
| 18-Magazine release | 46a-Spring of firing pin |
| 19-Trigger tube | 47-Pin of firing pin |
| 20-Magazine catch | 48- |
| 21-Trigger bar | 49-Extractor spring |
| 22-Safety lever left/right | 51-Distance column |
| 23-Safety pin | 52-Firing spring back-up |
| 24-Arrest clench | 53-Rear sight screw |
| 25-Trigger bar pin | 62-Barrel pin |
| 26-Hammer catch spring | 63-Barrel pin |
| 27-Trigger bar pin | |